

TECHNICAL DATA SHEET

**D - 200 - 01
EC DOORS**

EC DOORS

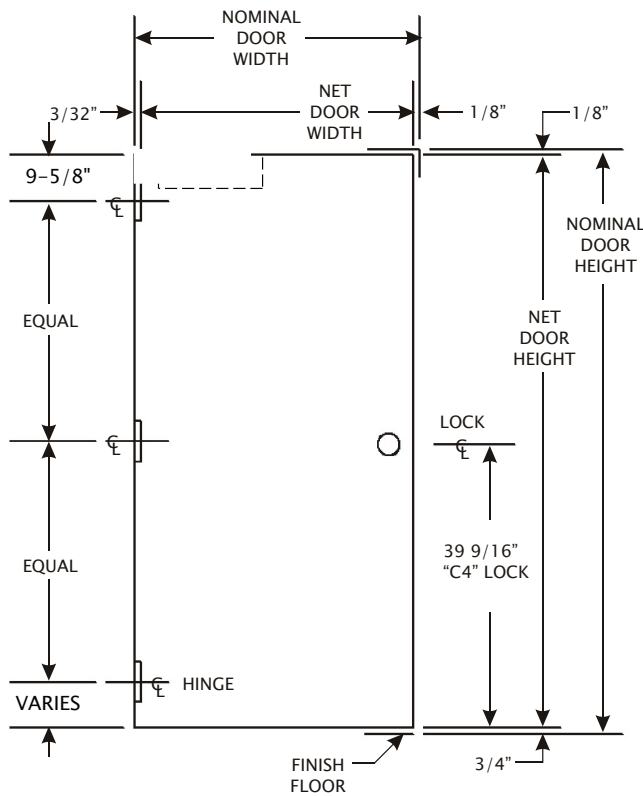
20 ga Steel
 1 3/4" Door (Not UL label approved)
 Polystyrene Core
 Available sizes: 2868, 2870, 3068, 3070 ONLY
 3 Hinges Reinforcements 4 1/2" x 4 1/2"
 C4 Preparation Or Blank Doors Only
 No Closer Reinforcement
 Doors shall receive 1 coat of rustinhibitive gray primer ANSI A250-10
 Standard Hinge and locks MMI locations
 Made under the same procedures of our Classic MMI Door

EC AVAILABLE DOOR WIDTHS

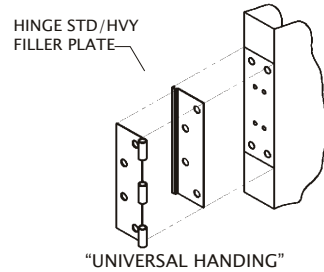
NOMINAL DOOR WIDTHS	NET DOOR WIDTHS
2'-8"	31 3/4"
3'-0"	35 3/4"

EC AVAILABLE DOOR HEIGHTS

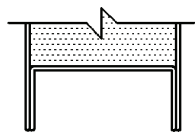
NOMINAL DOOR HEIGHTS	NET DOOR HEIGHTS
6-8"	79 1/8"
7'-0"	83 1/8"



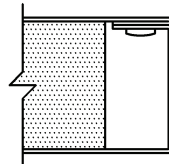
Only sold in skid qty of 20
 (ALL 20 DOORS MUST HAVE THE SAME HDW PREPS.)
No cardboard wrap



**NO CLOSER
REINFORCEMENT
NOT UL APPROVED**



16 GAUGE
TOP
& BOTTOM
CHANNEL
INVERTED



MECHANICALLY
INTERLOCKED
SQUARE EDGE

Issue Date: January 2006

REVISED : 02/01/2009

